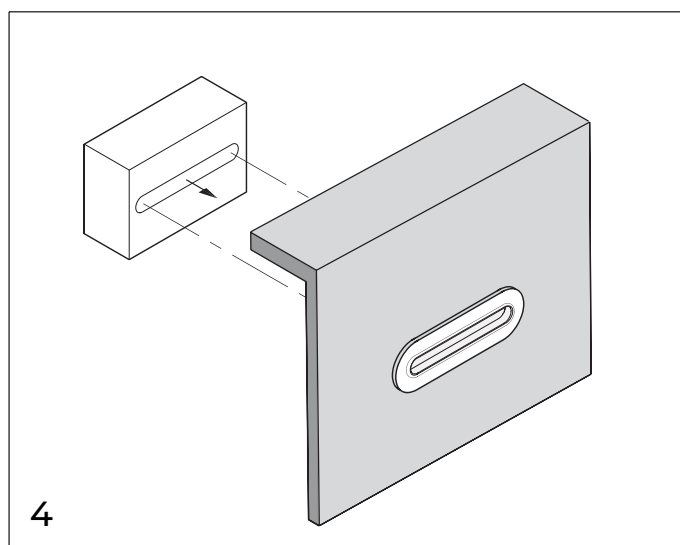
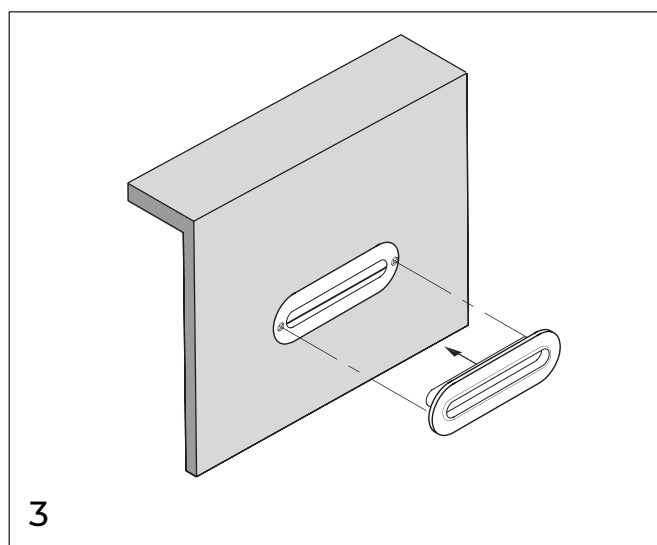
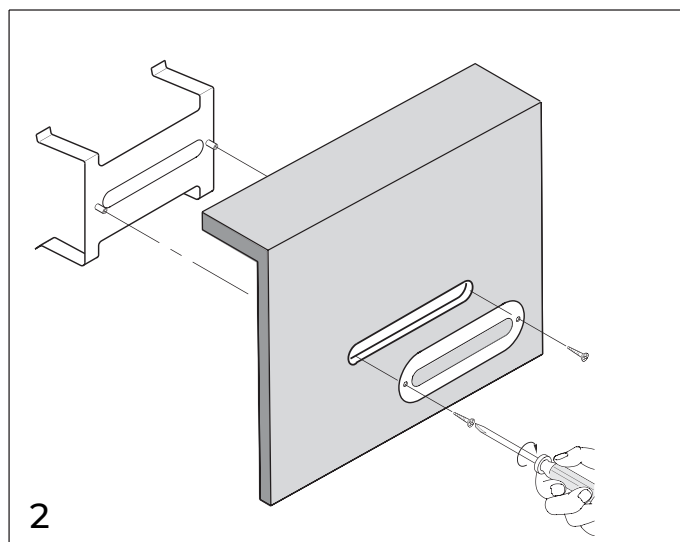
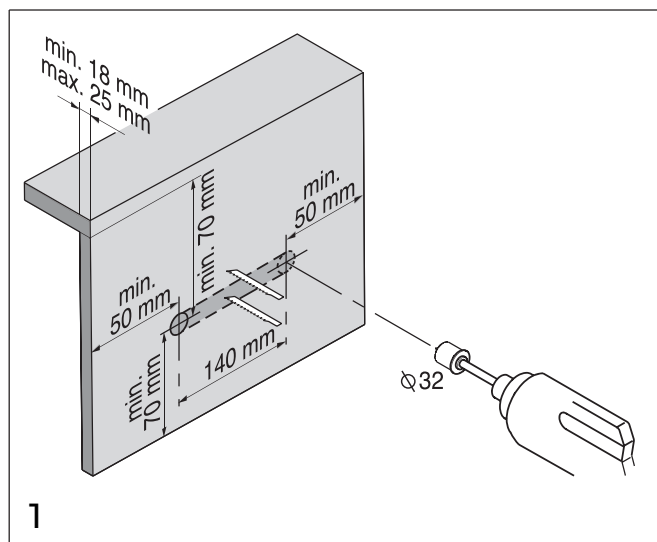




installation and maintenance instruction for Tissue holder Simple

Installation instruction



Maintaince instruction

1. For daily cleaning of this accessories, use only a soft cloth moisturized with water or (if necessary) some mild detergent or a little soap.
2. Never use scouring powder, steel wool or a cleaning agent that is acidic, or contains alcohol or abrasive detergent.
3. Limescale can be removed with water and vinegar. Never use abrasives, chlorine or cleaning agents containing hydrochloric acid.
4. It is preferable to clean stainless steel accessories with a cleaning agent specifically intended for stainless steel.
5. Always rinse well with water and dry/polish with a clean, dry cloth. This is necessary to fully remove any cleaning agent residue.